

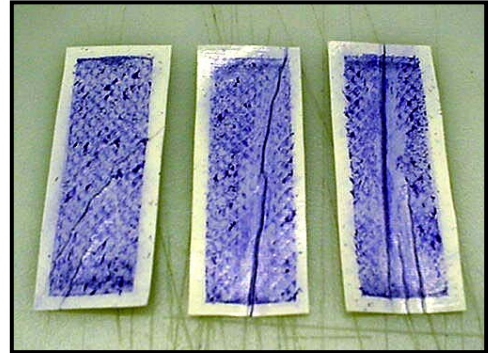
Autopsy Analyses

Standard Analyses

The following physical, chemical and biological analyses are included in a standard DHP membrane element autopsy:

Physical Analyses

1. Element Weight
2. Fiberglass finish
3. Active membrane area determination
4. Glue-line coverage
5. Glue adhesion
6. Membrane defects
7. Visual and microscopic evaluation of foulant/scalant
8. Average water flux determination
9. Average salt rejection determination
10. Dye penetration determination
11. Loss-On-Ignition determination

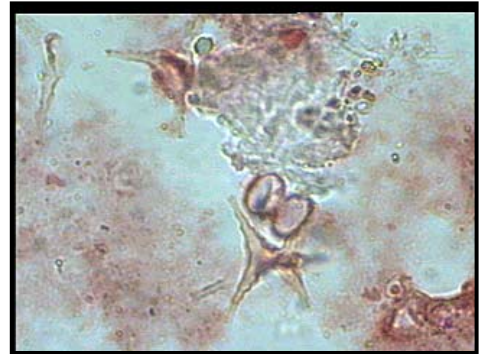


Chemical Analyses

1. Scalant reaction to acid
2. Energy-Dispersive X-Ray (EDX) analysis of the surface of the membrane or scalant/foulant layer
3. Fourier Transform Infrared (FTIR) analysis of the surface of the membrane or scalant/foulant layer

Biological Analyses

1. Microscopic evaluation
2. Gram-Stain evaluation
3. Slime-Forming Bacteria culture
4. Iron-Related Bacteria culture
5. Sulfate Reducing Bacteria culture



Additional Analyses

The following analyses may be requested and performed for an additional charge:

1. Fujiwara analysis for chlorine damage (\$100)
2. Scanning electron microscopy (SEM) photographs (\$500/hour, one hour minimum)
3. EDX of particles or other material (\$350/hour, one hour minimum)
4. FTIR analysis of particles or other material (\$350/hour, one hour minimum)